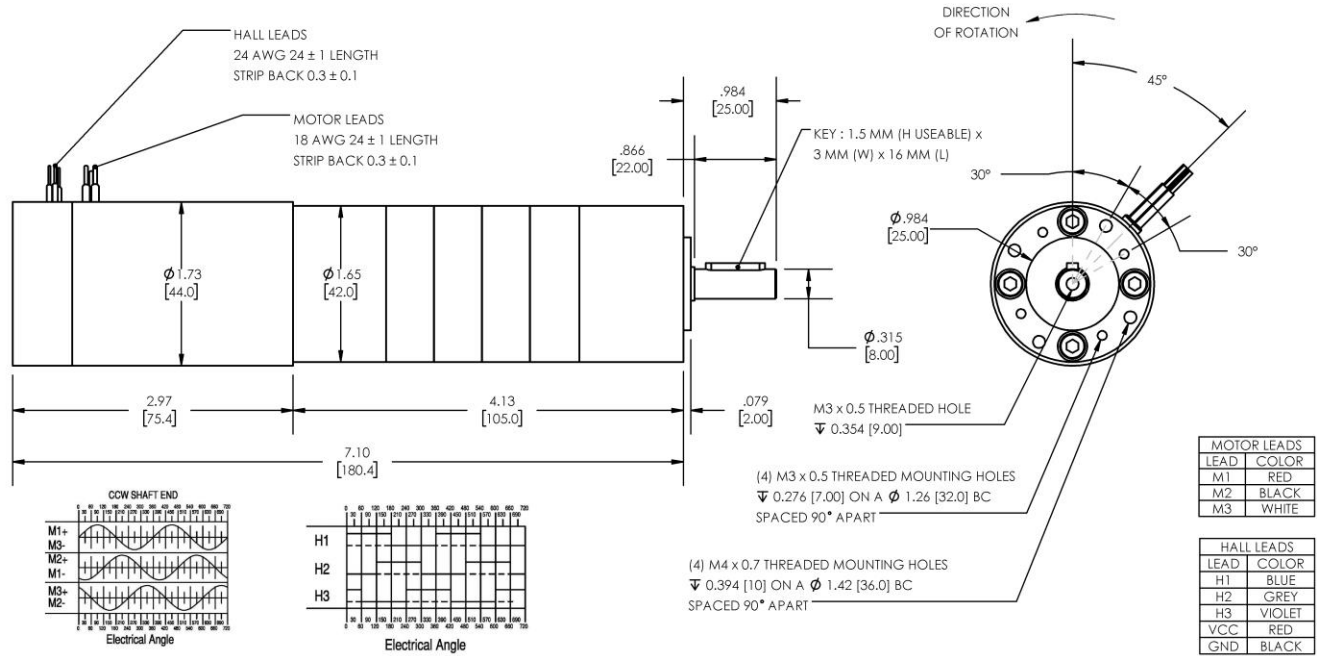


**Model Number:**

## MMP BL44-297H-90V GP42-777



PLANETARY GEARMOTOR OUTPUT PARAMETERS:	VALUE	UNITS	TOLERANCE
Gearhead Ratio (exact)	776.76 : 1		
Gearhead Shaft Output Speed (at full-load)	6.1	RPM	MAX
Gearmotor Rated Continuous Torque	266	In-Lbs	MAX
Gearmotor Rated Peak Torque	<b>266++</b>	In-Lbs	----
Gearhead Standard Backlash	63	Arc Minutes	MAX
Gearhead Efficiency	65%	----	----
Output Shaft Radial Load Capacity	68	Lbs	MAX
Output Shaft Axial Load Capacity	25	Lbs	MAX
Gearmotor Total Weight	2.5	Lbs	MAX

**++ All Peak Torque values are dependent upon duty. Contact our sales office for details.**

DC MOTOR PERFORMANCE PARAMETERS:	VALUE	UNITS	TOLERANCE
Rated DC Voltage	90	DC VOLTS	----
Rated Continuous Current	0.40	AMPERES	----
No-Load Speed	5017	RPM	+/- 15%
Rated Speed	4764	RPM	+/- 15%
Rated Continuous Power Out	30	WATTS	+/- 15%
Rated Continuous Torque	8.4	OZ-IN	----
Peak Torque (motor only)	111	OZ-IN	----
No-Load Current	0.05	AMPERES	10%
Back EMF Constant (Ke)	17.8	V/KRPM	+/- 10%
Torque Constant (Kt)	24.0	OZ-IN/AMP	+/- 10%
DC Armature Resistance	13.00	OHMS	+/- 15%
Armature Inductance	10.24	mH	+/- 15%
Armature temperature	155	DEG. C	MAX

**NOTES:**

- ENCODER & BRAKE OPTIONS AVAILABLE – [FOLLOW THIS LINK FOR DETAILS](#)
- NEMA MOUNTING FLANGE OPTION AVAILABLE – [FOLLOW THIS LINK FOR DETAILS](#)